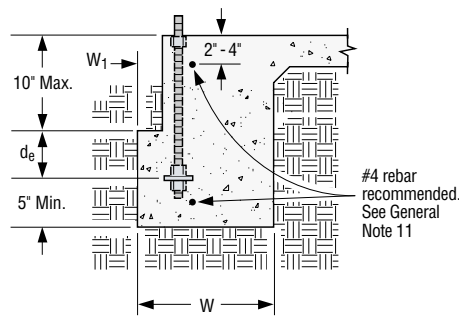


STEEL STRONG-WALL®: 12" WIDE MODELS (3/4" DIAMETER ANCHOR)

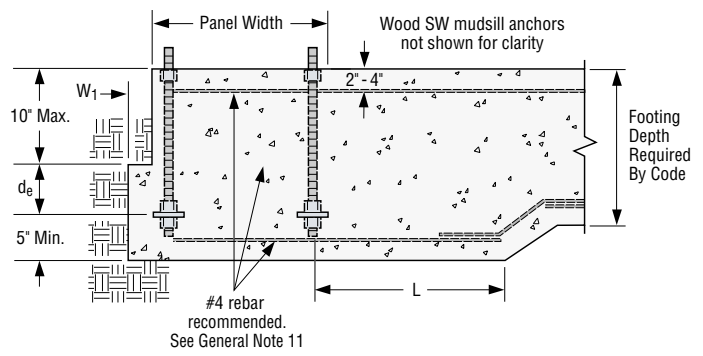
Minimum Concrete Strength, f'_c (psi)	Anchorage Classification	Minimum Footing Width, W/W_1 (in)	Cast-in-Place Anchor			Post-Installed Anchor (Adhesive) ^{2,3,4}				
			Anchor Bolt Type	Minimum Footing Length, L (in)	Minimum Embedment Depth, d_e (in)	Minimum Footing Length, L (in)	Embedment Depth, d_e (in)			
							Corner Installation		Interior Installation	
							SET-XP™/SET	AT	SET-XP™/SET	AT
2500	A	12 / 2	SSWAB $\frac{3}{4}$ "	9	6	24	12	12	12	12
	B	12 / 2	SSWAB $\frac{3}{4}$ "	12	8	24	16	20	12	12
	C	12 / 2	SSWAB $\frac{3}{4}$ "	21	14	24	— ¹	— ¹	16	16
	D	18 / 2	SSWAB $\frac{3}{4}$ "	24	16	24	— ¹	— ¹	20	20
	E	24 / 10	SSWAB $\frac{3}{4}$ HS	12	8	NS	NS	NS	NS	NS
	F	30 / 12	SSWAB $\frac{3}{4}$ HS	15	10	NS	NS	NS	NS	NS
3000	A	12 / 2	SSWAB $\frac{3}{4}$ "	9	6	24	12	12	12	12
	B	12 / 2	SSWAB $\frac{3}{4}$ "	9	6	24	16	16	12	12
	C	12 / 2	SSWAB $\frac{3}{4}$ "	18	12	24	20	20	12	16
	D	18 / 2	SSWAB $\frac{3}{4}$ "	21	14	24	— ¹	— ¹	16	20
	E	24 / 8	SSWAB $\frac{3}{4}$ HS	12	8	NS	NS	NS	NS	NS
	F	30 / 10	SSWAB $\frac{3}{4}$ HS	15	10	NS	NS	NS	NS	NS
3500	A	12 / 2	SSWAB $\frac{3}{4}$ "	9	6	24	12	12	12	12
	B	12 / 2	SSWAB $\frac{3}{4}$ "	9	6	24	16	16	12	12
	C	12 / 2	SSWAB $\frac{3}{4}$ "	15	10	24	20	20	12	12
	D	18 / 2	SSWAB $\frac{3}{4}$ "	21	14	24	— ¹	— ¹	12	16
	E	24 / 8	SSWAB $\frac{3}{4}$ HS	12	8	NS	NS	NS	NS	NS
	F	24 / 10	SSWAB $\frac{3}{4}$ HS	12	8	NS	NS	NS	NS	NS

- See page 52 for additional post-installed adhesive anchorage solutions.
- Post-installed anchor rods shall be 3/4" diameter ASTM F1554 Grade 36 or ASTM A36 minimum threaded rods.
- Post-installed solutions must be installed with Simpson Strong-Tie® SET-XP™, SET or AT Acrylic-Tie® anchoring adhesives.
- Simpson Strong-Tie SET-XP™ anchoring adhesive may be required in some building jurisdictions.
- NS = No solution available.
- See general note 11 for additional anchorage and foundation information.

Slab on Grade



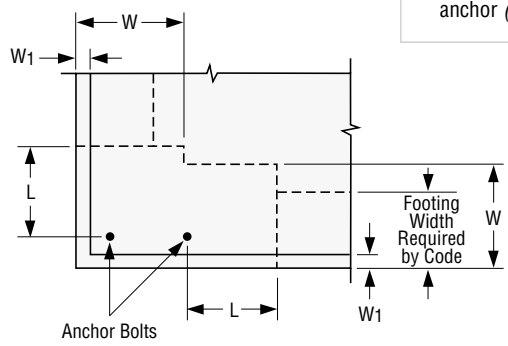
**Section View
SSWAB Application**
(SWAB similar)



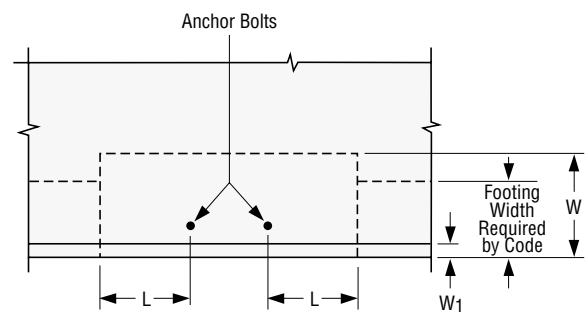
**Elevation View – Corner Installation
SSWAB Application**
(SWAB similar)

SSWAB DETAILS

- See page 50 for perspective views and post-installed anchor (adhesive) details.



**Plan View
Corner Installation
Cast-in-Place/Adhesive Application**



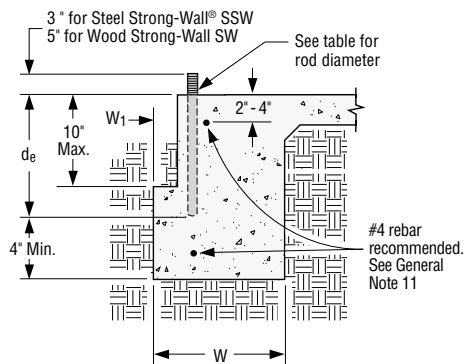
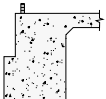
**Plan View
Interior Installation
Cast-in-Place/Adhesive Application**

STEEL STRONG-WALL®: 15" AND WIDER MODELS (1" DIAMETER ANCHOR)

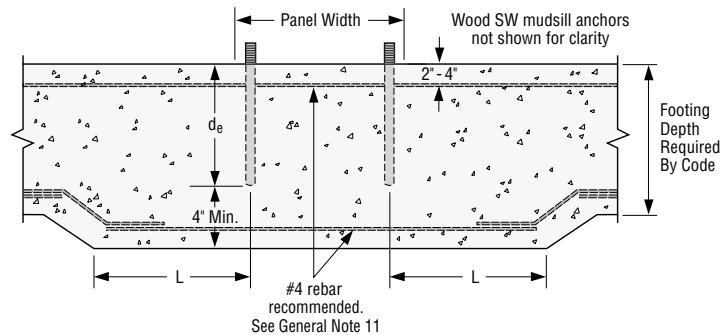
Minimum Concrete Strength, f'_c (psi)	Anchorage Classification	Minimum Footing Width, W/W_1 (in)	Cast-in-Place Anchor			Post-Installed Anchor (Adhesive) ^{2,3,4}				
			Anchor Bolt Type	Minimum Footing Length, L (in)	Minimum Embedment Depth, d_e (in)	Minimum Footing Length, L (in)	Embedment Depth, d_e (in)			
							Corner Installation		Interior Installation	
						SET-XP™/SET	AT	SET-XP™/SET	AT	
2500	A	12 / 2	SSWAB1	9	6	24	12	12	12	12
	B	12 / 2	SSWAB1	12	8	24	16	16	12	12
	C	12 / 2	SSWAB1	21	14	24	— ¹	— ¹	16	16
	D	18 / 2	SSWAB1	24	16	24	— ¹	— ¹	20	20
	E	24 / 10	SSWAB1	12	8	— ¹	— ¹	— ¹	— ¹	— ¹
	F	30 / 12	SSWAB1	15	10	NS	NS	NS	NS	NS
	G	36 / 14	SSWAB1HS	18	12	NS	NS	NS	NS	NS
	H	42 / 18	SSWAB1HS	21	14	NS	NS	NS	NS	NS
3000	A	12 / 2	SSWAB1	9	6	24	12	12	12	12
	B	12 / 2	SSWAB1	9	6	24	16	16	12	12
	C	12 / 2	SSWAB1	18	12	24	20	20	12	12
	D	18 / 2	SSWAB1	21	14	24	— ¹	— ¹	16	16
	E	24 / 8	SSWAB1	12	8	24	— ¹	— ¹	20	20
	F	30 / 10	SSWAB1	15	10	NS	NS	NS	NS	NS
	G	36 / 14	SSWAB1HS	18	12	NS	NS	NS	NS	NS
	H	36 / 16	SSWAB1HS	21	14	NS	NS	NS	NS	NS
3500	A	12 / 2	SSWAB1	9	6	24	12	12	12	12
	B	12 / 2	SSWAB1	9	6	24	12	12	12	12
	C	12 / 2	SSWAB1	15	10	24	16	16	12	12
	D	18 / 2	SSWAB1	21	14	24	20	— ¹	12	16
	E	24 / 8	SSWAB1	12	8	24	— ¹	— ¹	16	20
	F	24 / 10	SSWAB1	12	8	24	NS	NS	20	NS
	G	30 / 12	SSWAB1HS	18	12	NS	NS	NS	NS	NS
	H	36 / 16	SSWAB1HS	18	12	NS	NS	NS	NS	NS

- See page 52 for additional post-installed adhesive anchorage solutions.
- Post-installed anchor rods shall be 1" diameter ASTM F1554 Grade 36 or ASTM A36 minimum threaded rods.
- Post-installed solutions must be installed with Simpson Strong-Tie® SET-XP™, SET or AT Acrylic-Tie® anchoring adhesives.
- Simpson Strong-Tie SET-XP™ anchoring adhesive may be required in some building jurisdictions.
- NS = No solution available.
- See general note 11 for additional anchorage and foundation information.

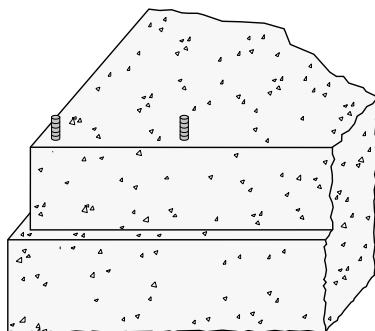
Slab on Grade



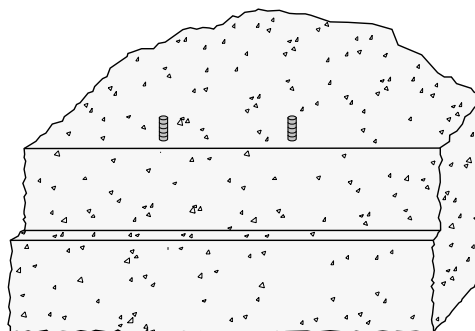
Section View Adhesive Application



Elevation View – Interior Installation Adhesive Application



Perspective View – Corner Installation



Perspective View – Interior Installation

POST-INSTALLED ANCHOR (ADHESIVE) DETAILS

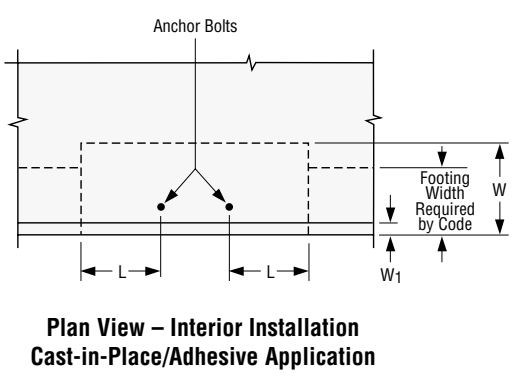
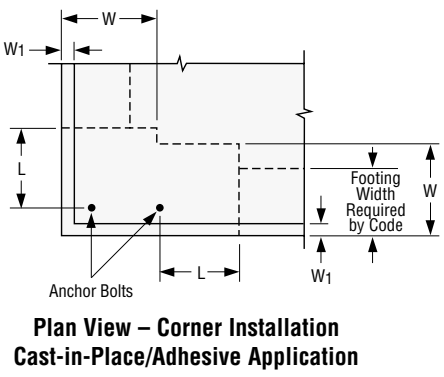
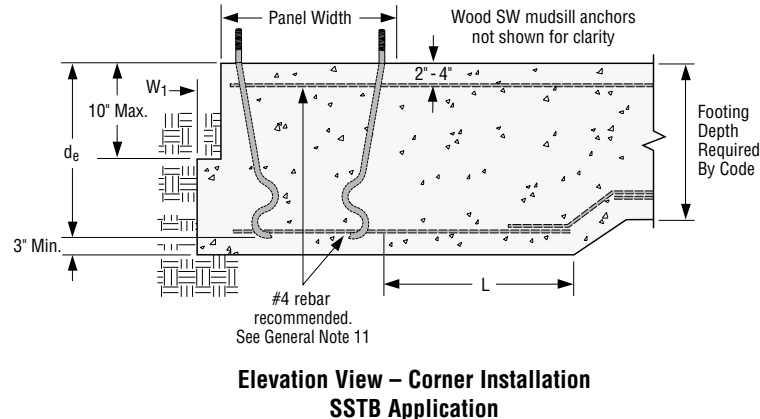
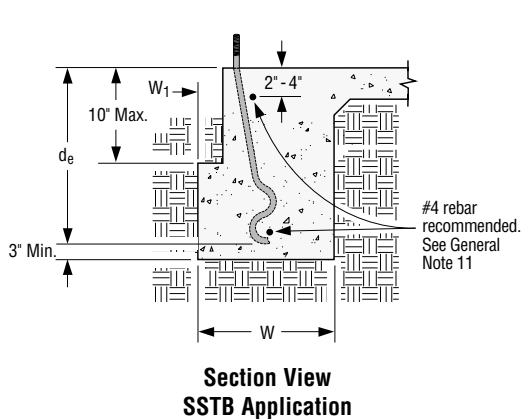
- See page 49 for plan views and SSWAB details.

WOOD STRONG-WALL®: ALL MODELS (7/8" DIAMETER ANCHOR)

Minimum Concrete Strength, f'_c (psi)	Anchorage Classification	Minimum Footing Width, W/W_1 (in)	Cast-in-Place Anchor ⁵			Post-Installed Anchor (Adhesive) ^{2,3,4,5}				
			Anchor Bolt Type	Minimum Footing Length, L (in)	Minimum Embedment Depth, d_e (in)	Minimum Footing Length, L (in)	Embedment Depth, d_e (in)			
							Corner Installation		Interior Installation	
							SET-XP™/SET	AT	SET-XP™/SET	AT
2500	A	12 / 2	SWAB $\frac{7}{8}$ "	9	6	24	12	12	12	12
			SSTB28	30	24					
	B	12 / 2	SWAB $\frac{7}{8}$ "	9	6	24	16	16	12	12
			SSTB28	30	24					
	C	12 / 2	SWAB $\frac{7}{8}$ "	18	12	24	20	— ¹	16	16
SSTB28			30	24						
D	18 / 2	SWAB $\frac{7}{8}$ "	24	16	24	— ¹	— ¹	20	20	
E	24 / 10	SWAB $\frac{7}{8}$ "	12	8	— ¹	— ¹	NS	— ¹	NS	
3000	A	12 / 2	SWAB $\frac{7}{8}$ "	9	6	24	12	12	12	12
			SSTB28	30	24					
	B	12 / 2	SWAB $\frac{7}{8}$ "	9	6	24	12	16	12	12
			SSTB28	30	24					
	C	12 / 2	SWAB $\frac{7}{8}$ "	15	10	24	16	20	12	12
SSTB28			30	24						
D	18 / 2	SWAB $\frac{7}{8}$ "	21	14	24	— ¹	— ¹	16	16	
E	24 / 8	SWAB $\frac{7}{8}$ "	12	8	24	— ¹	NS	20	NS	
3500	A	12 / 2	SWAB $\frac{7}{8}$ "	9	6	24	12	12	12	12
			SSTB28	30	24					
	B	12 / 2	SWAB $\frac{7}{8}$ "	9	6	24	12	12	12	12
			SSTB28	30	24					
	C	12 / 2	SWAB $\frac{7}{8}$ "	12	8	24	16	16	12	12
SSTB28			30	24						
D	18 / 2	SWAB $\frac{7}{8}$ "	18	12	24	20	20	12	16	
E	24 / 8	SWAB $\frac{7}{8}$ "	12	8	24	— ¹	NS	16	20	

1. See page 52 for additional post-installed adhesive anchorage solutions.
2. Post-installed anchor rods shall be $\frac{7}{8}$ " diameter ASTM F1554 Grade 36 or ASTM A36 minimum threaded rods.
3. Post-installed solutions must be installed with Simpson Strong-Tie® SET-XP™, SET or AT Acrylic-Tie® anchoring adhesives.
4. Simpson Strong-Tie SET-XP™ anchoring adhesive may be required in some building jurisdictions.
5. SW mudsill anchors shall be $\frac{5}{8}$ " diameter x 12" long minimum embedded 7". For post-installed adhesive installation, use $\frac{5}{8}$ " diameter x 10" long all-thread rod minimum (*model RFB#5x10*) embedded 5".
6. NS = No solution available.
7. See general note 11 for additional anchorage and foundation information.

Slab on Grade



SSTB DETAILS

1. See page 49 for SWAB details.
2. See page 50 for perspective views and post-installed anchor (*adhesive*) details.