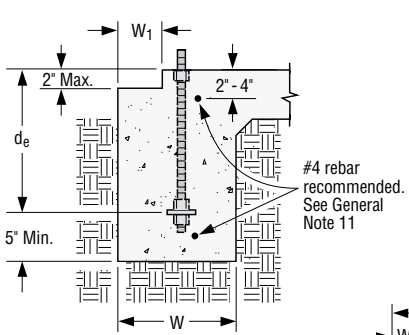


**STEEL STRONG-WALL®: 12" WIDE MODELS (3/4" DIAMETER ANCHOR)**

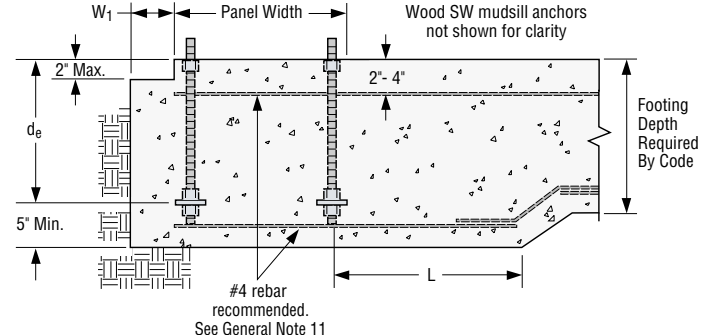
Minimum Concrete Strength, $f'_c$ (psi)	Anchorage Classification	Minimum Footing Width, $W/W_1$ (in)	Cast-in-Place Anchor			Post-Installed Anchor (Adhesive) <sup>2,3,4</sup>				
			Anchor Bolt Type	Minimum Footing Length, $L$ (in)	Minimum Embedment Depth, $d_e$ (in)	Minimum Footing Length, $L$ (in)	Embedment Depth, $d_e$ (in)			
							Corner Installation		Interior Installation	
SET-XP™/SET	AT	SET-XP™/SET	AT							
2500	A	12 / 5.5	SSWAB $\frac{3}{4}$ "	9	8	24	12	12	12	12
	B	12 / 5.5	SSWAB $\frac{3}{4}$ "	9	8	24	12	12	12	12
	C	12 / 5.5	SSWAB $\frac{3}{4}$ "	15	12	24	12	12	16	16
	D	18 / 5.5	SSWAB $\frac{3}{4}$ "	15	12	24	16	16	20	20
	E	24 / 5.5	SSWAB $\frac{3}{4}$ HS	21	16	NS	NS	NS	NS	NS
	F	30 / 5.5	SSWAB $\frac{3}{4}$ HS	27	20	NS	NS	NS	NS	NS
3000	A	12 / 5.5	SSWAB $\frac{3}{4}$ "	9	8	24	12	12	12	12
	B	12 / 5.5	SSWAB $\frac{3}{4}$ "	9	8	24	12	12	12	12
	C	12 / 5.5	SSWAB $\frac{3}{4}$ "	12	10	24	12	12	12	16
	D	18 / 5.5	SSWAB $\frac{3}{4}$ "	12	10	24	16	16	16	20
	E	24 / 5.5	SSWAB $\frac{3}{4}$ HS	21	16	NS	NS	NS	NS	NS
	F	24 / 5.5	SSWAB $\frac{3}{4}$ HS	27	20	NS	NS	NS	NS	NS
3500	A	12 / 5.5	SSWAB $\frac{3}{4}$ "	9	8	24	12	12	12	12
	B	12 / 5.5	SSWAB $\frac{3}{4}$ "	9	8	24	12	12	12	12
	C	12 / 5.5	SSWAB $\frac{3}{4}$ "	9	8	24	12	12	12	12
	D	18 / 5.5	SSWAB $\frac{3}{4}$ "	12	10	24	16	16	16	16
	E	24 / 5.5	SSWAB $\frac{3}{4}$ HS	18	14	NS	NS	NS	NS	NS
	F	24 / 5.5	SSWAB $\frac{3}{4}$ HS	24	18	NS	NS	NS	NS	NS

1. See page 59 for additional post-installed adhesive anchorage solutions.
2. Post-installed anchor rods shall be 3/4" diameter ASTM F1554 Grade 36 or ASTM A36 minimum threaded rods.
3. Post-installed solutions must be installed with Simpson Strong-Tie® SET-XP™, SET or AT Acrylic-Tie® anchoring adhesives.
4. Simpson Strong-Tie SET-XP™ anchoring adhesive may be required in some building jurisdictions.
5. Solutions depend upon foundation and slab being a monolithic pour.
6. NS = No solution available.
7. See general note 11 for additional anchorage and foundation information.

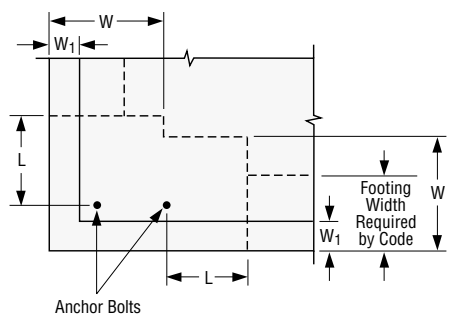
Brick Ledge



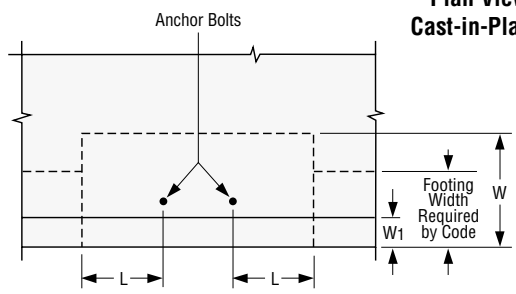
**Section View SSWAB Application**  
 (SWAB similar)



**Elevation View – Corner Installation SSWAB Application**  
 (SWAB similar)



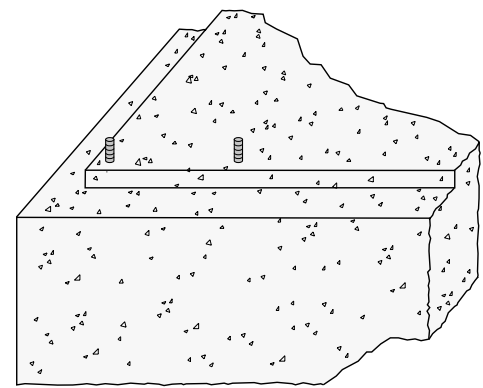
**Plan View – Corner Installation Cast-in-Place/Adhesive Application**



**Plan View – Interior Installation Cast-in-Place/Adhesive Application**

**SSWAB DETAILS**

1. See page 57 for post-installed anchor (adhesive) details.

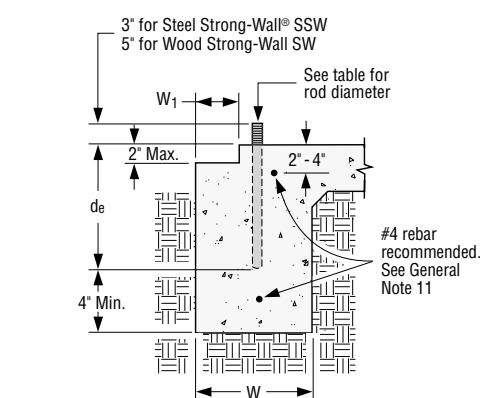


**Perspective View Corner Installation**

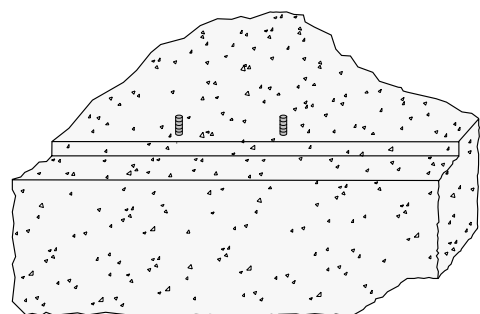
**STEEL STRONG-WALL®: 15" AND WIDER MODELS (1" DIAMETER ANCHOR)**

Minimum Concrete Strength, $f'_c$ (psi)	Anchorage Classification	Minimum Footing Width, $W/W_1$ (in)	Cast-in-Place Anchor			Post-Installed Anchor (Adhesive) <sup>2,3,4</sup>				
			Anchor Bolt Type	Minimum Footing Length, $L$ (in)	Minimum Embedment Depth, $d_e$ (in)	Minimum Footing Length, $L$ (in)	Embedment Depth, $d_e$ (in)			
							Corner Installation		Interior Installation	
SET-XP™/SET	AT	SET-XP™/SET	AT							
2500	A	12 / 5.5	SSWAB1	9	8	24	12	12	12	12
	B	12 / 5.5	SSWAB1	9	8	24	12	12	12	12
	C	12 / 5.5	SSWAB1	15	12	24	12	12	16	16
	D	18 / 5.5	SSWAB1	15	12	24	12	16	16	16
	E	24 / 5.5	SSWAB1	21	16	24	16	20	20	— <sup>1</sup>
	F	30 / 5.5	SSWAB1	27	20	NS	NS	NS	NS	NS
	G	36 / 14	SSWAB1HS	18	14	NS	NS	NS	NS	NS
	H	42 / 18	SSWAB1HS	21	16	NS	NS	NS	NS	NS
3000	A	12 / 5.5	SSWAB1	9	8	24	12	12	12	12
	B	12 / 5.5	SSWAB1	9	8	24	12	12	12	12
	C	12 / 5.5	SSWAB1	12	10	24	12	12	12	12
	D	18 / 5.5	SSWAB1	12	10	24	12	16	16	16
	E	24 / 5.5	SSWAB1	21	16	24	16	20	16	20
	F	24 / 5.5	SSWAB1	27	20	24	20	NS	20	NS
	G	36 / 14	SSWAB1HS	18	14	NS	NS	NS	NS	NS
	H	36 / 16	SSWAB1HS	21	16	NS	NS	NS	NS	NS
3500	A	12 / 5.5	SSWAB1	9	8	24	12	12	12	12
	B	12 / 5.5	SSWAB1	9	8	24	12	12	12	12
	C	12 / 5.5	SSWAB1	9	8	24	12	12	12	12
	D	18 / 5.5	SSWAB1	12	10	24	12	16	12	16
	E	24 / 5.5	SSWAB1	18	14	24	16	16	16	16
	F	24 / 5.5	SSWAB1	24	18	24	20	NS	16	20
	G	30 / 12	SSWAB1HS	18	14	NS	NS	NS	NS	NS
	H	36 / 16	SSWAB1HS	18	14	NS	NS	NS	NS	NS

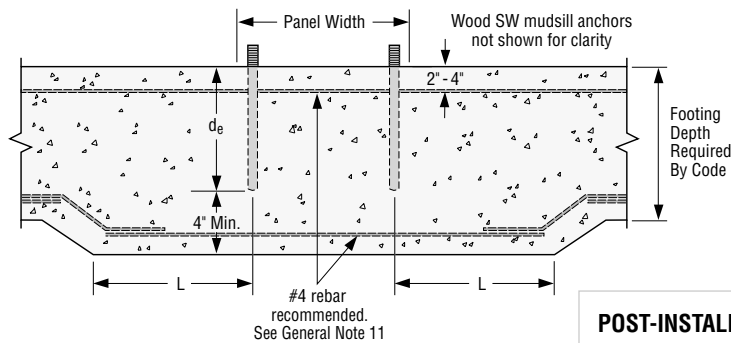
1. See page 59 for additional post-installed adhesive anchorage solutions.
2. Post-installed anchor rods shall be 1" diameter ASTM F1554 Grade 36 or ASTM A36 minimum threaded rods.
3. Post-installed solutions must be installed with Simpson Strong-Tie® SET-XP™, SET or AT Acrylic-Tie® anchoring adhesives.
4. Simpson Strong-Tie SET-XP™ anchoring adhesive may be required in some building jurisdictions.
5. Solutions depend upon foundation and slab being a monolithic pour.
6. NS = No solution available.
7. See general note 11 for additional anchorage and foundation information.



**Section View Adhesive Application**



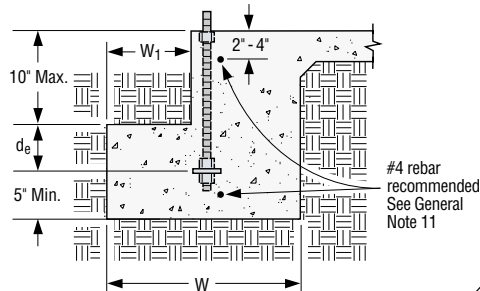
**Perspective View – Interior Installation**



**Elevation View – Interior Installation Adhesive Application**

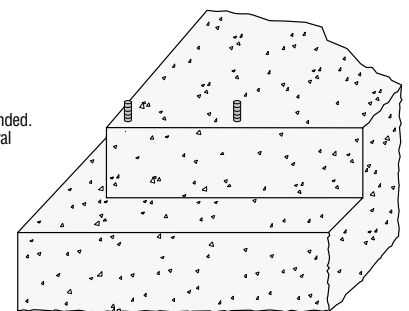
**POST-INSTALLED ANCHOR (ADHESIVE) DETAILS**

1. See page 56 for additional perspective view, plan views and SSWAB details.



**Section View – SSWAB Application (G and H Anchorage Classification)**

**G AND H ANCHORAGE CLASSIFICATION DETAILS**



**Perspective View – Corner Installation (G and H Anchorage Classification)**

**WOOD STRONG-WALL®: ALL MODELS (7/8" DIAMETER ANCHOR)**

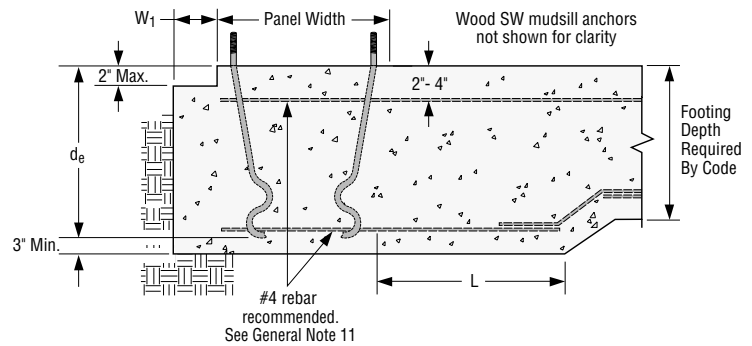
Minimum Concrete Strength, $f'_c$ (psi)	Anchorage Classification	Minimum Footing Width, $W/W_1$ (in)	Cast-in-Place Anchor <sup>5</sup>			Post-Installed Anchor (Adhesive) <sup>2,3,4,5</sup>				
			Anchor Bolt Type	Minimum Footing Length, $L$ (in)	Minimum Embedment Depth, $d_e$ (in)	Minimum Footing Length, $L$ (in)	Embedment Depth, $d_e$ (in)			
							Corner Installation		Interior Installation	
							SET-XP™/SET	AT	SET-XP™/SET	AT
2500	A	12 / 5.5	SWAB <sup>7/8"</sup>	9	8	24	12	12	12	12
			SSTB28	30	24					
	B	12 / 5.5	SWAB <sup>7/8"</sup>	9	8	24	12	12	12	12
			SSTB28	30	24					
	C	12 / 5.5	SWAB <sup>7/8"</sup>	15	12	24	12	12	16	16
SSTB28	30	24								
D	18 / 5.5	SWAB <sup>7/8"</sup>	15	12	24	12	16	16	20	
E	24 / 5.5	SWAB <sup>7/8"</sup>	21	16	24	16	20	20	NS	
3000	A	12 / 5.5	SWAB <sup>7/8"</sup>	9	8	24	12	12	12	12
			SSTB28	30	24					
	B	12 / 5.5	SWAB <sup>7/8"</sup>	9	8	24	12	12	12	12
			SSTB28	30	24					
	C	12 / 5.5	SWAB <sup>7/8"</sup>	12	10	24	12	12	12	12
SSTB28			30	24						
D	18 / 5.5	SWAB <sup>7/8"</sup>	12	10	24	12	16	16	16	
E	24 / 5.5	SWAB <sup>7/8"</sup>	18	14	24	16	20	16	20	
3500	A	12 / 5.5	SWAB <sup>7/8"</sup>	9	8	24	12	12	12	12
			SSTB28	30	24					
	B	12 / 5.5	SWAB <sup>7/8"</sup>	9	8	24	12	12	12	12
			SSTB28	30	24					
	C	12 / 5.5	SWAB <sup>7/8"</sup>	9	8	24	12	12	12	12
SSTB28	30	24								
D	18 / 5.5	SWAB <sup>7/8"</sup>	9	8	24	12	16	12	12	
E	24 / 5.5	SWAB <sup>7/8"</sup>	18	14	24	16	20	16	16	

Brick Ledge

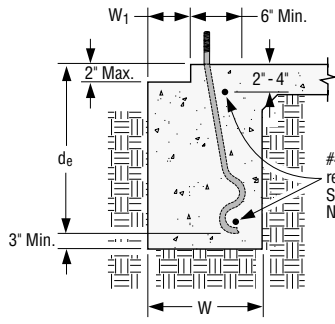
1. See page 59 for additional post-installed adhesive anchorage solutions.
2. Post-installed anchor rods shall be 7/8" diameter ASTM F1554 Grade 36 or ASTM A36 minimum threaded rods.
3. Post-installed solutions must be installed with Simpson Strong-Tie® SET-XP™, SET or AT Acrylic-Tie® anchoring adhesives.
4. Simpson Strong-Tie SET-XP™ anchoring adhesive may be required in some building jurisdictions.
5. SW mudsill anchors shall be 5/8" diameter x 12" long minimum embedded 7". For post-installed adhesive installation, use 5/8" diameter x 10" long all-thread rod minimum (model RFB#5x10) embedded 5".
6. Solutions depend upon foundation and slab being a monolithic pour.
7. NS = No solution available
8. See general note 11 for additional anchorage and foundation information.

**SSTB DETAILS**

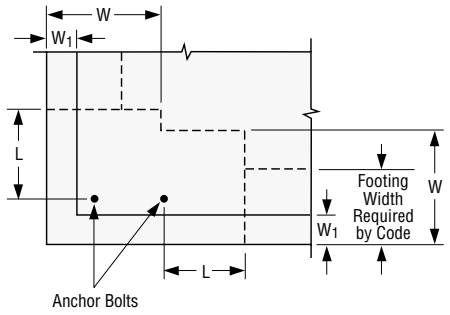
1. See page 56 for perspective view and SWAB details.
2. See page 57 for perspective view and post-installed anchor (adhesive) details.



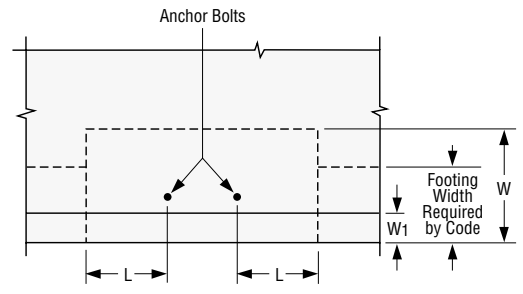
**Elevation View – Corner Installation SSTB Application**



**Section View SSTB Application**



**Plan View – Corner Installation Cast-in-Place/Adhesive Application**



**Plan View – Interior Installation Cast-in-Place/Adhesive Application**