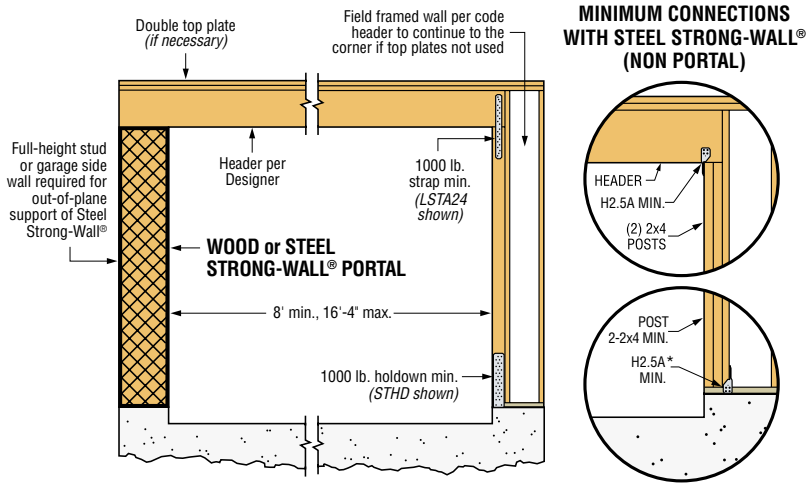


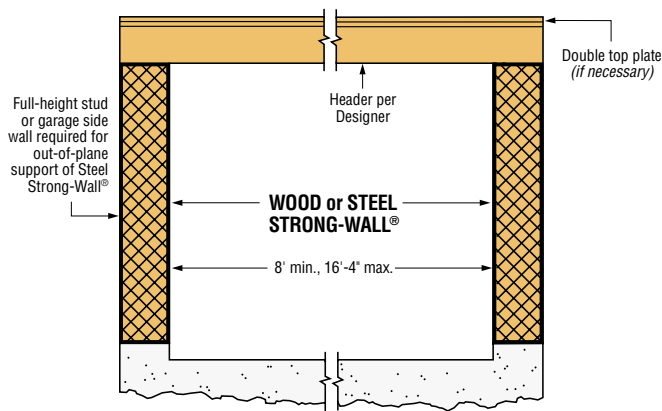
Wood and Steel Strong-Wall®: Installation Information

Refer to installation information attached to walls included with connection kits or at www.strongtie.com.

GARAGE FRONTS

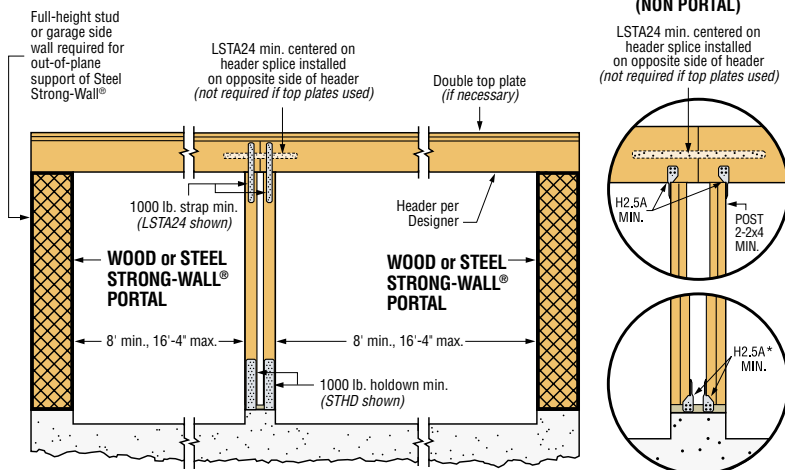


*Zmax connectors (for example, H2.5AZ) should be used when in contact with some preservative-treated woods. See www.strongtie.com for the most current information.



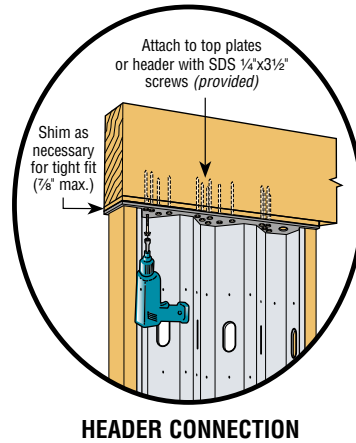
MINIMUM CONNECTIONS WITH STEEL STRONG-WALL® (NON PORTAL)

LSTA24 min. centered on header splice installed on opposite side of header (not required if top plates used)

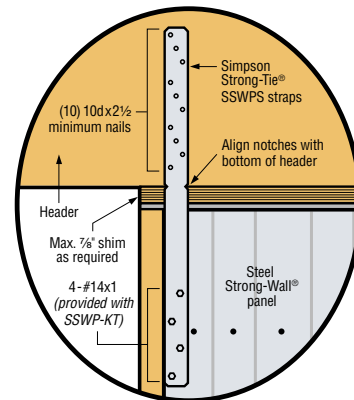


*Zmax connectors (for example, H2.5AZ) should be used when in contact with some preservative-treated woods. See www.strongtie.com for the most current information.

TOP CONNECTIONS – STEEL STRONG-WALL®



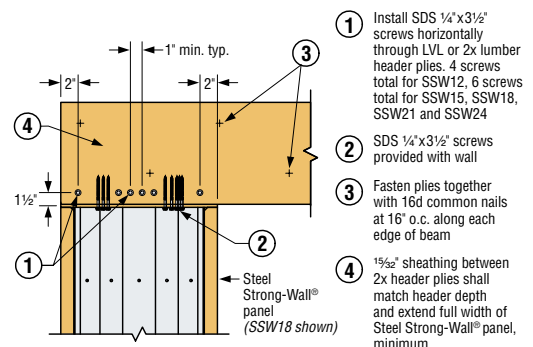
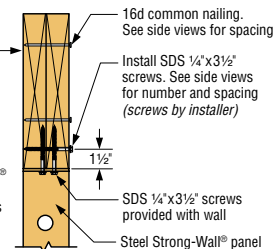
HEADER CONNECTION



EXTERIOR VIEW OF GARAGE PORTAL FRAME (When specified with SSWP-KT)

Header by Designer. 2-ply 2x12 min. with 1/2" sheathing between plies or 2-ply 1 3/4"x11 1/8" min. LVL (2-ply LVL shown)

Note: Multi-ply headers may be used with Steel Strong-Wall® panel for wind designs or in seismic design categories A-C (IBC & IRC) only



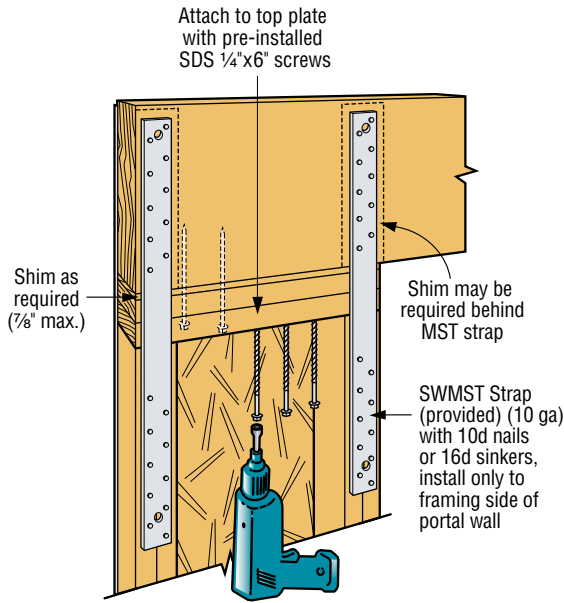
Side View

SSW WITH MULTI-PLY HEADER

Wood Strong-Wall®: Installation Information



TOP CONNECTIONS



HEADER CONNECTION



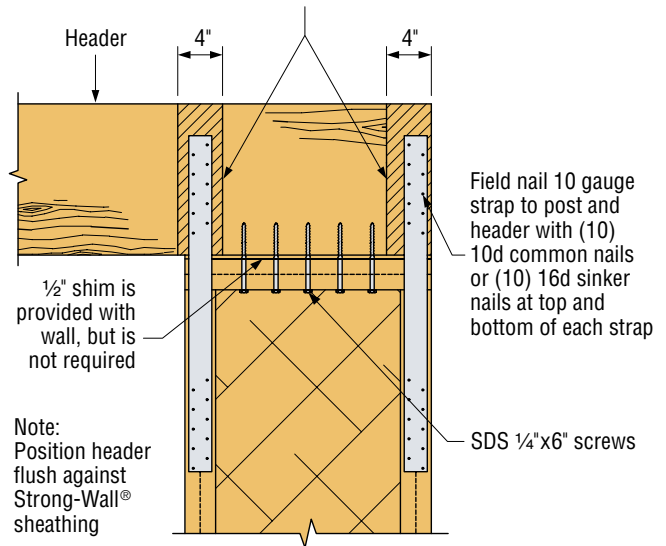
CAUTION: Drilling or cutting holes in Wood Strong-Wall® is not allowed except as shown on the Allowable Hole Chart attached to each wall.



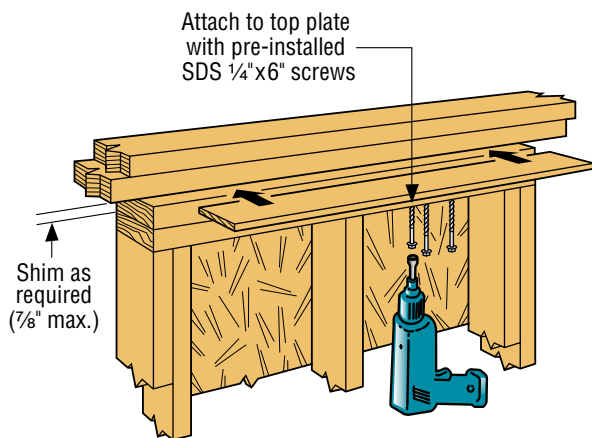
Use 3/8" plywood/OSB shim under strap when header is 3 1/8" GLB

MULTI-PLY HEADERS FOR GARAGE PORTAL WALLS

1. Garage portal walls may be used with double 2x12 minimum or double 1 3/4"x11 7/8" minimum LVL headers unless noted otherwise.
2. Headers shall be face nailed to each other with minimum 16d nails at 32" on center staggered along the top and bottom.
3. Double 2x12 require 1/2" ply or OSB shim to make the header assembly flush with Wood Strong-Wall® panel. The shim shall match the header depth and Wood Strong-Wall panel width minimum. It may be placed on either face of header or between plies directly over the Wood Strong-Wall panel.



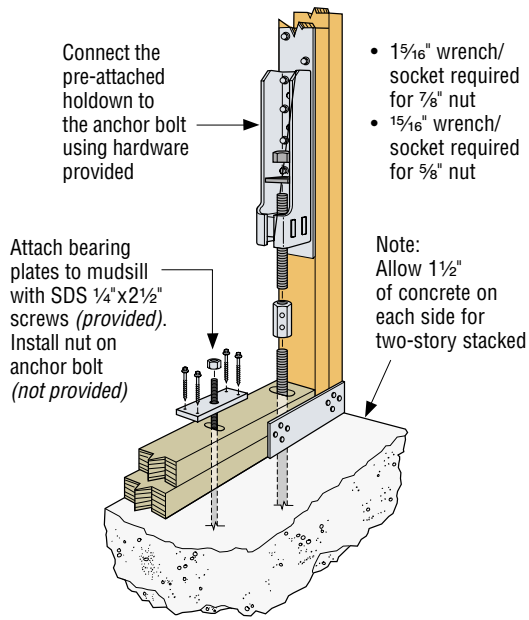
SHIM DETAIL FOR 3 1/8" GLB



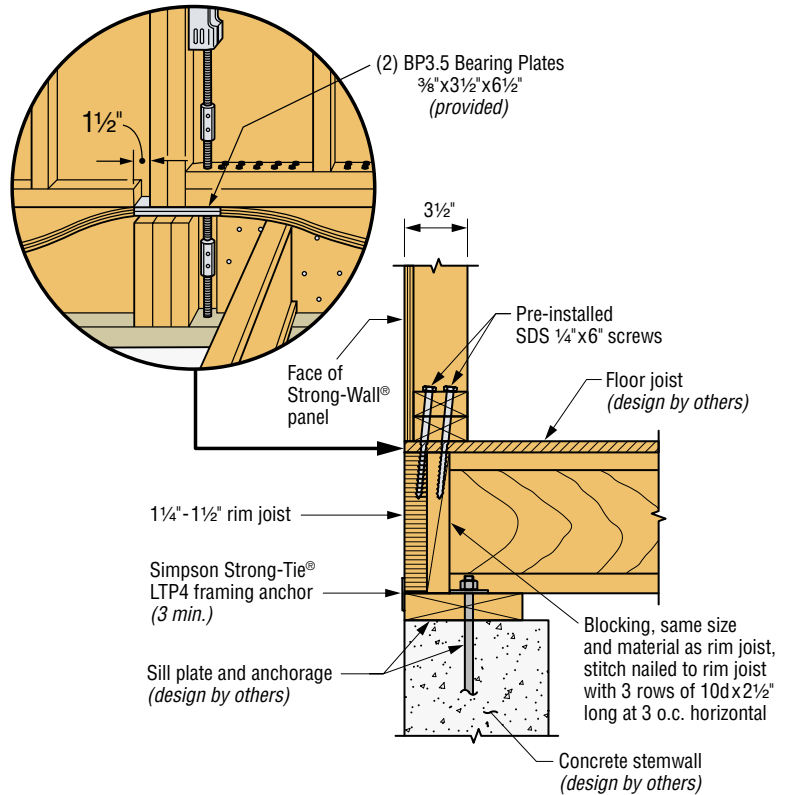
TOP-OF-WALL CONNECTION

Wood Strong-Wall®: Installation Information

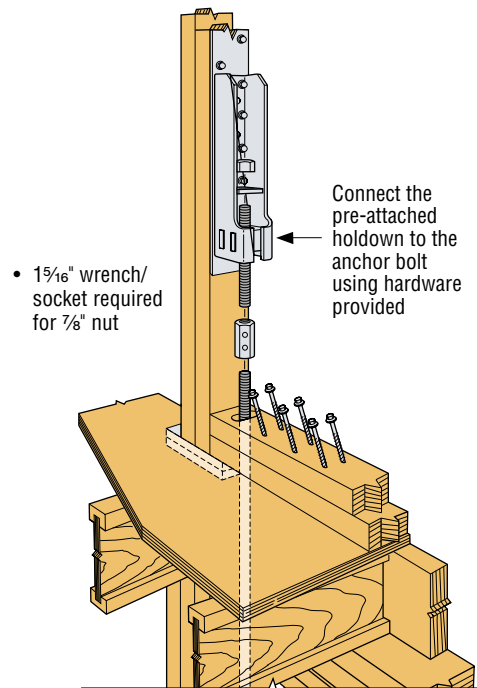
BOTTOM-OF-WALL CONNECTIONS



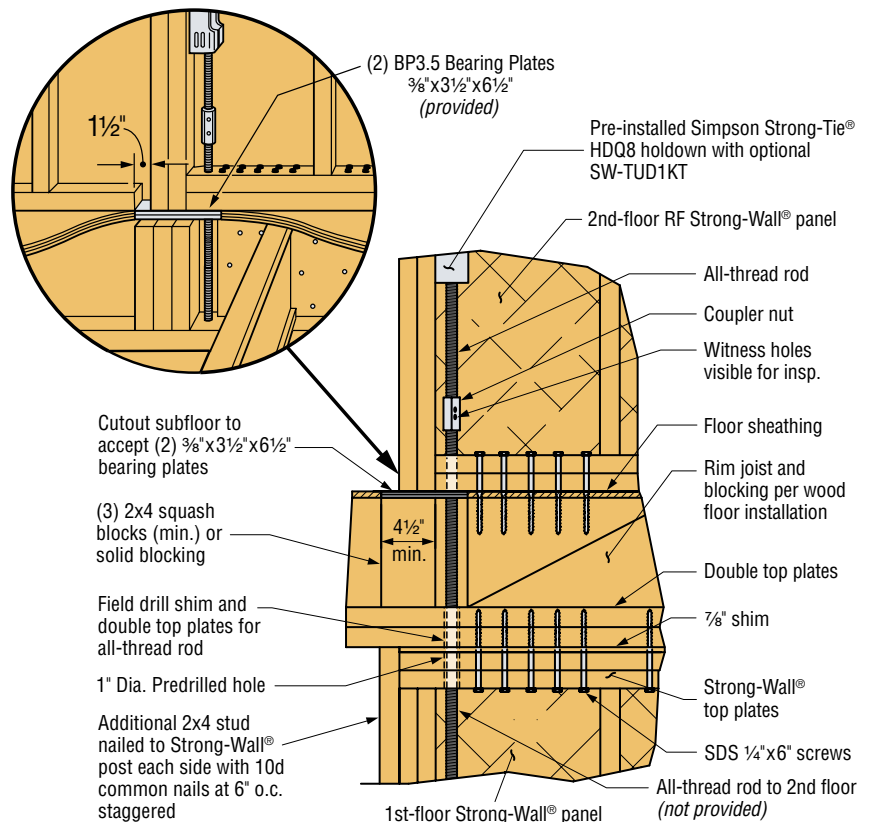
BOTTOM-OF-WALL INSTALLATION ON CONCRETE FOUNDATION



BOTTOM-OF-WALL INSTALLATION ON WOOD FLOOR



BOTTOM-OF-WALL INSTALLATION ON WOOD FLOOR



TWO-STORY STACKED INSTALLATION